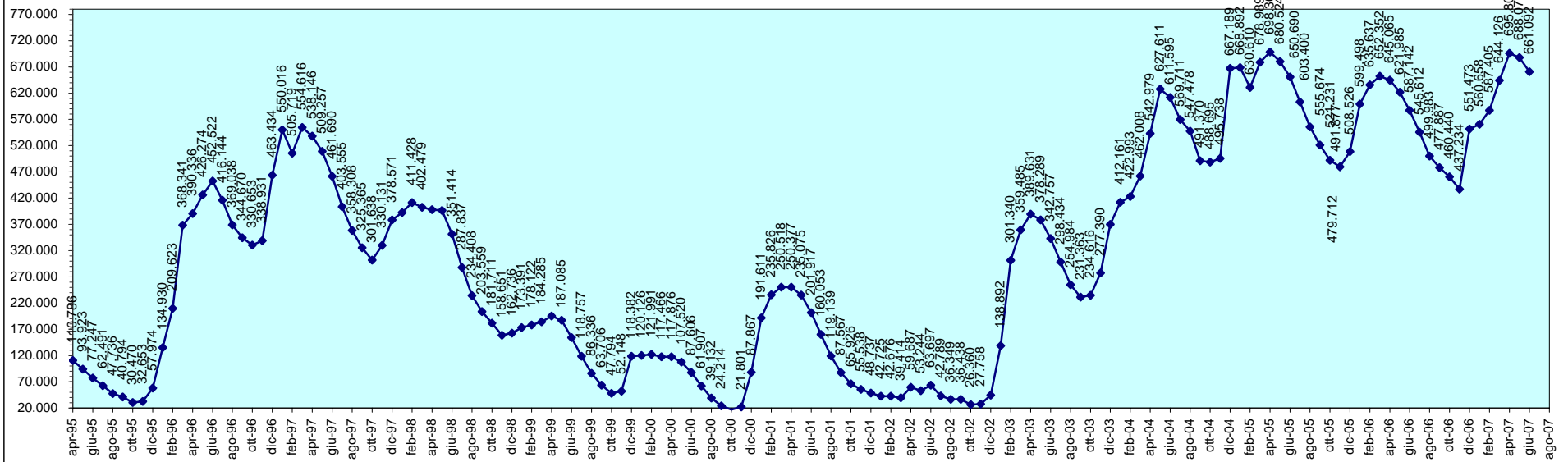
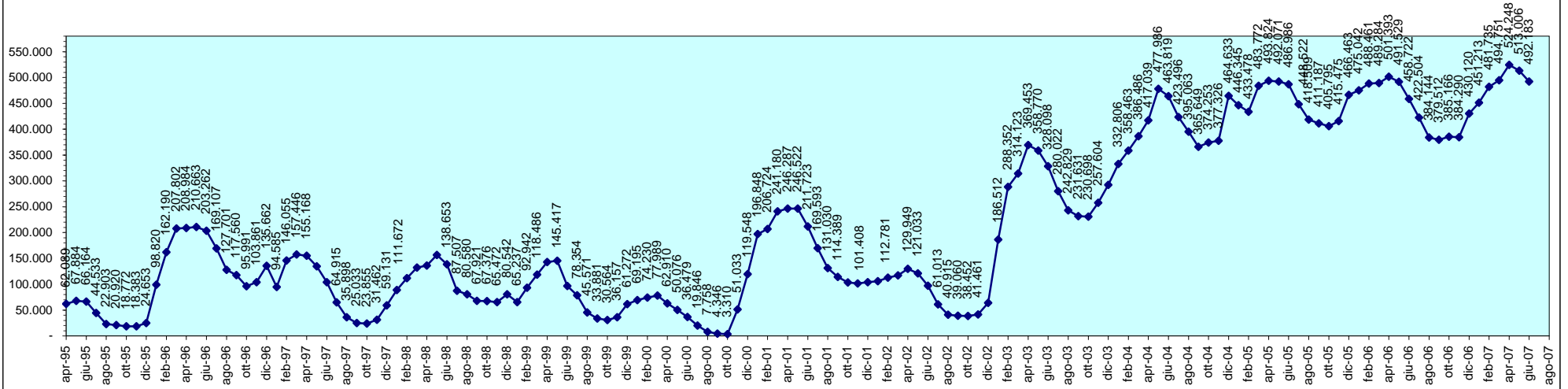


**SITUAZIONE RISORSE IDRICHE DISPONIBILI**  
**ZONE IDROGRAFICHE I-VII SULCIS-FLUMENDOSA-CAMPIDANO - CIXERRI**  
**aggiornamento al 30/06/2007**



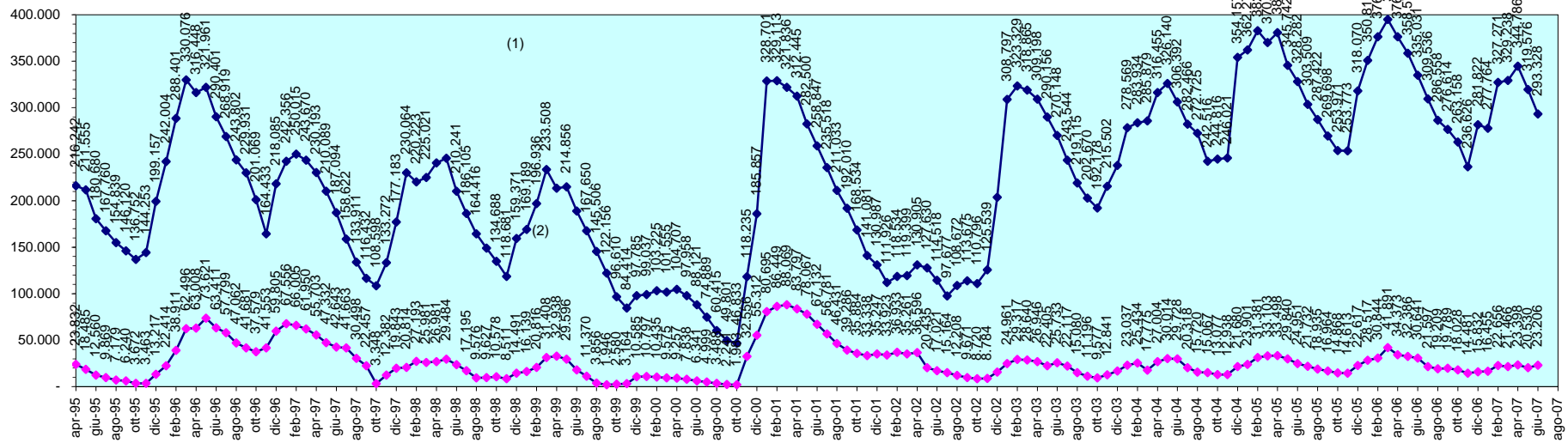
SCALA: 1.000 = 1.000.000 mc

SITUAZIONE RISORSE IDRICHE DISPONIBILI  
 ZONA IDROGRAFICA II - TIRSO  
 aggiornamento al 30/06/2007



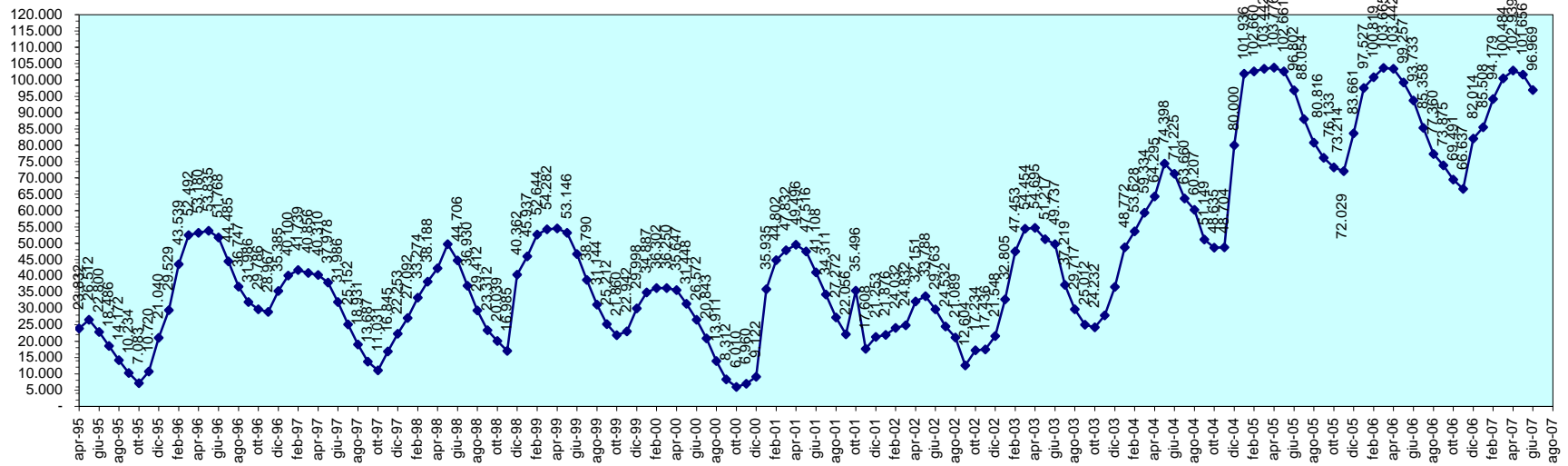
SCALA: 1.000 = 1.000.000 mc

**SITUAZIONE RISORSE IDRICHE DISPONIBILI**  
**(1) ZONA IDROGRAFICA III - COGHINAS-MANNU-TEMO**  
**(2) ZONA IDROGRAFICA III - ESCLUSO COGHINAS E MANNU PATTADA**  
 aggiornamento al 30/06/2007



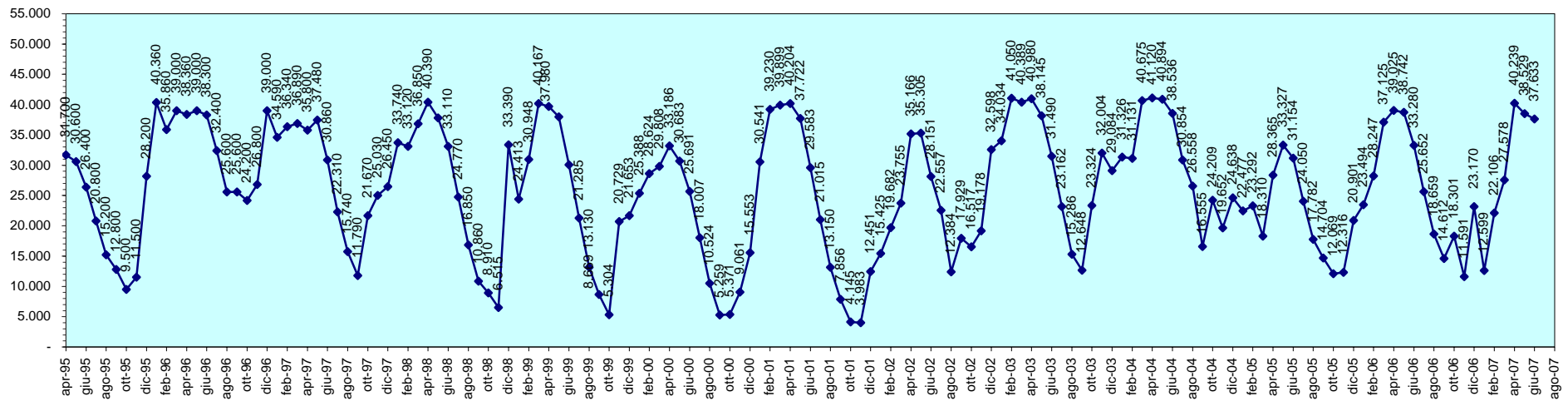
SCALA: 1.000 = 1.000.000 mc

SITUAZIONE RISORSE IDRICHE DISPONIBILI  
 ZONA IDROGRAFICA IV - LISCIA  
 aggiornamento al 30/06/2007



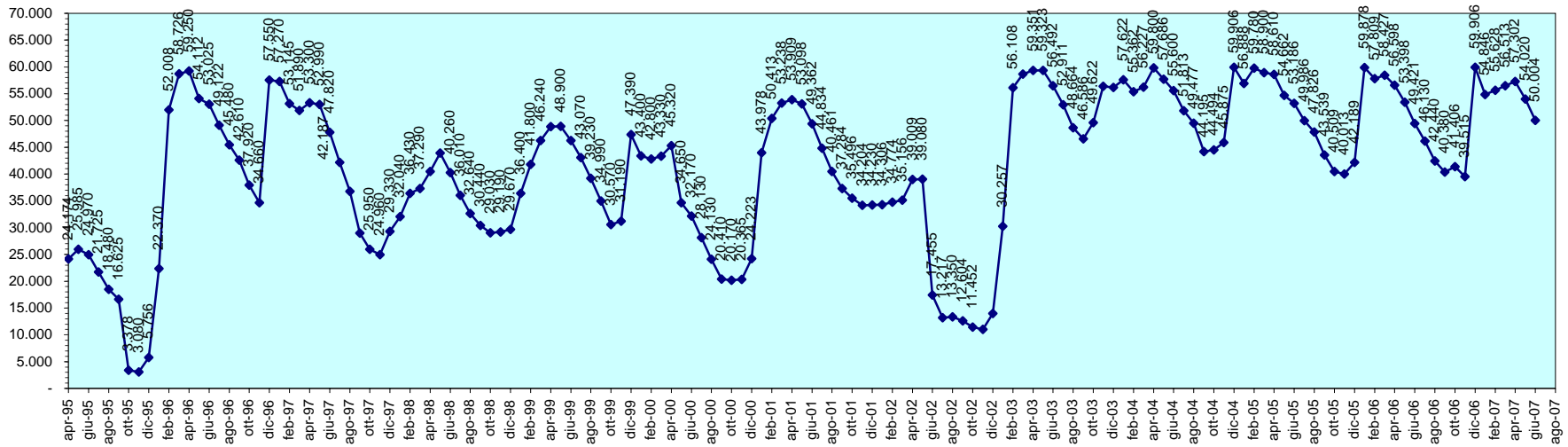
SCALA: 1.000 = 1.000.000 mc

SITUAZIONE RISORSE IDRICHE DISPONIBILI  
 ZONA IDROGRAFICA V - POSADA-CEDRINO  
 aggiornamento al 30/06/2007



SCALA: 1.000 = 1.000.000 mc

**SITUAZIONE RISORSE IDRICHE DISPONIBILI**  
**ZONA IDROGRAFICA VI - SUD-ORIENTALE**  
 aggiornamento al 30/06/2007



SCALA: 1.000 = 1.000.000 mc

	I+VII		II		III	III-CMT		IV
30-apr-95	110.786	30-apr-95	62.089	30-apr-95	216.242	23.832	30-apr-95	23.832
31-mag-95	93.923	31-mag-95	67.884	31-mag-95	211.555	18.485	31-mag-95	26.512
30-giu-95	77.247	30-giu-95	66.164	30-giu-95	180.680	12.560	30-giu-95	22.800
31-lug-95	62.491	31-lug-95	44.533	31-lug-95	167.760	9.869	31-lug-95	18.486
31-ago-95	47.736	31-ago-95	22.903	31-ago-95	154.839	7.179	31-ago-95	14.172
30-set-95	40.794	30-set-95	20.920	30-set-95	146.120	6.240	30-set-95	10.234
31-ott-95	30.470	31-ott-95	18.772	31-ott-95	136.752	3.672	31-ott-95	7.083
30-nov-95	32.653	30-nov-95	18.383	30-nov-95	144.253	3.463	30-nov-95	10.720
31-dic-95	57.974	31-dic-95	24.653	31-dic-95	199.157	13.217	31-dic-95	21.040
31-gen-96	134.930	31-gen-96	98.820	31-gen-96	242.004	22.414	31-gen-96	29.529
29-feb-96	209.623	29-feb-96	162.190	29-feb-96	288.401	38.911	29-feb-96	43.539
31-mar-96	368.341	31-mar-96	207.802	31-mar-96	330.076	62.496	31-mar-96	52.492
30-apr-96	390.336	30-apr-96	208.984	30-apr-96	316.448	63.008	30-apr-96	53.180
31-mag-96	426.274	31-mag-96	210.663	31-mag-96	321.961	73.621	31-mag-96	53.835
30-giu-96	452.522	30-giu-96	203.262	30-giu-96	290.401	63.411	30-giu-96	51.768
31-lug-96	416.144	31-lug-96	169.107	31-lug-96	268.919	57.799	31-lug-96	44.485
31-ago-96	369.038	31-ago-96	127.701	31-ago-96	243.802	47.062	31-ago-96	36.747
30-set-96	344.670	30-set-96	117.560	30-set-96	229.931	41.681	30-set-96	31.986
31-ott-96	330.653	31-ott-96	95.991	31-ott-96	201.069	37.579	31-ott-96	29.786
30-nov-96	338.931	30-nov-96	103.861	30-nov-96	164.433	41.553	30-nov-96	28.967
31-dic-96	463.434	31-dic-96	135.662	31-dic-96	218.085	59.805	31-dic-96	35.385
31-gen-97	550.016	31-gen-97	94.585	31-gen-97	242.356	67.556	31-gen-97	40.100
28-feb-97	505.719	28-feb-97	146.055	28-feb-97	250.015	66.005	28-feb-97	41.739
31-mar-97	554.616	31-mar-97	157.446	31-mar-97	243.670	61.950	31-mar-97	40.856
30-apr-97	538.146	30-apr-97	155.168	30-apr-97	230.193	55.703	30-apr-97	40.310
31-mag-97	509.257	31-mag-97	134.584	31-mag-97	210.089	47.332	31-mag-97	37.978
30-giu-97	461.690	30-giu-97	104.068	30-giu-97	187.094	42.643	30-giu-97	31.986
31-lug-97	403.555	31-lug-97	64.915	31-lug-97	158.622	41.663	31-lug-97	25.152
31-ago-97	358.308	31-ago-97	35.898	31-ago-97	133.911	30.498	31-ago-97	18.931
30-set-97	325.365	30-set-97	25.033	30-set-97	116.432	22.457	30-set-97	13.687
31-ott-97	301.638	31-ott-97	23.855	31-ott-97	108.598	3.348	31-ott-97	11.031
30-nov-97	330.131	30-nov-97	31.462	30-nov-97	133.272	12.382	30-nov-97	16.845
31-dic-97	378.571	31-dic-97	59.131	31-dic-97	177.183	19.843	31-dic-97	22.253
31-gen-98	392.665	31-gen-98	88.862	31-gen-98	230.064	20.814	31-gen-98	27.092
28-feb-98	411.428	28-feb-98	111.672	28-feb-98	220.223	27.193	28-feb-98	33.274
31-mar-98	402.479	31-mar-98	132.074	31-mar-98	225.021	25.981	31-mar-98	38.188
30-apr-98	397.763	30-apr-98	135.958	30-apr-98	240.611	26.981	30-apr-98	42.339
31-mag-98	396.671	31-mag-98	156.416	31-mag-98	245.634	29.484	31-mag-98	49.737
30-giu-98	351.414	30-giu-98	138.653	30-giu-98	210.241	23.781	30-giu-98	44.706
31-lug-98	287.837	31-lug-98	87.507	31-lug-98	186.105	17.195	31-lug-98	36.930
31-ago-98	234.408	31-ago-98	80.580	31-ago-98	164.416	9.576	31-ago-98	29.412
30-set-98	203.559	30-set-98	67.921	30-set-98	149.047	9.627	30-set-98	23.312
31-ott-98	181.711	31-ott-98	67.376	31-ott-98	134.688	10.578	31-ott-98	20.039
30-nov-98	158.651	30-nov-98	65.472	30-nov-98	118.681	8.511	30-nov-98	16.985
31-dic-98	162.736	31-dic-98	80.542	31-dic-98	159.371	14.491	31-dic-98	40.362
31-gen-99	173.391	31-gen-99	65.237	31-gen-99	169.189	16.139	31-gen-99	45.937
28-feb-99	178.122	28-feb-99	92.942	28-feb-99	196.936	20.816	28-feb-99	52.644
31-mar-99	184.285	31-mar-99	118.486	31-mar-99	233.508	31.408	31-mar-99	54.282
30-apr-99	195.167	30-apr-99	142.840	30-apr-99	213.598	32.938	30-apr-99	54.489
31-mag-99	187.085	31-mag-99	145.417	31-mag-99	214.856	29.596	31-mag-99	53.146
30-giu-99	154.115	30-giu-99	96.473	30-giu-99	188.840	18.130	30-giu-99	46.726
31-lug-99	118.757	31-lug-99	78.354	31-lug-99	167.650	11.370	31-lug-99	38.790
31-ago-99	86.336	31-ago-99	45.571	31-ago-99	145.506	3.856	31-ago-99	31.144
30-set-99	63.706	30-set-99	33.881	30-set-99	122.156	1.946	30-set-99	25.212

31-ott-99	47.794	31-ott-99	30.564	31-ott-99	96.610	2.580	31-ott-99	21.860
30-nov-99	52.148	30-nov-99	36.157	30-nov-99	84.414	3.164	30-nov-99	22.942
31-dic-99	118.382	31-dic-99	61.272	31-dic-99	97.785	10.585	31-dic-99	29.998
31-gen-00	120.126	31-gen-00	69.195	31-gen-00	99.037	10.797	31-gen-00	34.887
29-feb-00	121.991	29-feb-00	74.230	29-feb-00	103.225	10.435	29-feb-00	36.302
31-mar-00	117.466	31-mar-00	77.989	31-mar-00	101.555	9.575	31-mar-00	36.250
30-apr-00	117.876	30-apr-00	62.910	30-apr-00	104.707	9.257	30-apr-00	35.647
31-mag-00	107.520	31-mag-00	50.076	31-mag-00	97.958	7.838	31-mag-00	31.448
30-giu-00	87.606	30-giu-00	36.479	30-giu-00	88.121	6.341	30-giu-00	26.572
31-lug-00	61.907	31-lug-00	19.846	31-lug-00	74.889	4.999	31-lug-00	20.843
31-ago-00	39.132	31-ago-00	7.758	31-ago-00	60.415	3.488	31-ago-00	13.911
30-set-00	24.214	30-set-00	4.346	30-set-00	49.801	2.241	30-set-00	8.312
31-ott-00	17.061	31-ott-00	3.310	31-ott-00	46.833	1.983	31-ott-00	6.010
30-nov-00	21.801	30-nov-00	51.033	30-nov-00	118.235	32.556	30-nov-00	6.960
31-dic-00	87.867	31-dic-00	119.548	31-dic-00	185.857	55.312	31-dic-00	9.122
31-gen-01	191.611	31-gen-01	196.848	31-gen-01	328.701	80.695	31-gen-01	35.935
28-feb-01	235.826	28-feb-01	206.724	28-feb-01	329.113	86.449	28-feb-01	44.802
31-mar-01	250.518	31-mar-01	241.180	31-mar-01	321.836	88.069	31-mar-01	47.832
30-apr-01	250.377	30-apr-01	246.287	30-apr-01	312.445	83.797	30-apr-01	49.496
31-mag-01	235.075	31-mag-01	246.522	31-mag-01	282.500	78.067	31-mag-01	47.516
30-giu-01	201.917	30-giu-01	211.723	30-giu-01	258.847	67.132	30-giu-01	41.108
31-lug-01	160.053	31-lug-01	169.593	31-lug-01	235.518	56.781	31-lug-01	34.311
31-ago-01	119.139	31-ago-01	131.030	31-ago-01	211.033	46.431	31-ago-01	27.272
30-set-01	87.567	30-set-01	114.389	30-set-01	192.010	39.286	30-set-01	22.056
31-ott-01	65.926	31-ott-01	103.503	31-ott-01	168.534	35.884	31-ott-01	35.496
30-nov-01	55.538	30-nov-01	101.408	30-nov-01	141.081	33.338	30-nov-01	17.608
31-dic-01	48.737	31-dic-01	103.662	31-dic-01	130.987	35.247	31-dic-01	21.253
31-gen-02	42.725	31-gen-02	105.687	31-gen-02	111.926	33.923	31-gen-02	21.876
28-feb-02	42.676	28-feb-02	112.781	28-feb-02	118.534	36.933	28-feb-02	24.032
31-mar-02	39.414	31-mar-02	116.927	31-mar-02	119.399	35.261	31-mar-02	24.832
30-apr-02	59.687	30-apr-02	129.949	30-apr-02	130.905	36.596	30-apr-02	32.151
31-mag-02	53.244	31-mag-02	121.033	31-mag-02	127.630	20.435	31-mag-02	33.788
30-giu-02	63.697	30-giu-02	97.045	30-giu-02	114.518	17.021	30-giu-02	29.763
31-lug-02	42.789	31-lug-02	61.013	31-lug-02	97.677	15.164	31-lug-02	24.532
31-ago-02	36.349	31-ago-02	40.915	31-ago-02	108.672	12.208	31-ago-02	21.089
30-set-02	36.438	30-set-02	39.060	30-set-02	113.675	9.671	30-set-02	12.604
31-ott-02	26.360	31-ott-02	38.452	31-ott-02	110.796	8.720	31-ott-02	17.234
30-nov-02	27.758	30-nov-02	41.461	30-nov-02	125.539	8.784	30-nov-02	17.436
31-dic-02	44.733	31-dic-02	63.785	31-dic-02	203.761	15.695	31-dic-02	21.548
31-gen-03	138.892	31-gen-03	186.512	31-gen-03	308.797	24.961	31-gen-03	32.805
28-feb-03	301.340	28-feb-03	288.352	28-feb-03	323.329	29.317	28-feb-03	47.453
31-mar-03	359.485	31-mar-03	314.123	31-mar-03	318.865	28.640	31-mar-03	54.454
30-apr-03	389.631	30-apr-03	369.453	30-apr-03	309.198	26.946	30-apr-03	54.695
31-mag-03	378.289	31-mag-03	358.770	31-mag-03	290.156	22.405	31-mag-03	51.217
30-giu-03	342.757	30-giu-03	328.098	30-giu-03	270.148	25.733	30-giu-03	49.737
31-lug-03	298.434	31-lug-03	280.022	31-lug-03	243.544	22.117	31-lug-03	37.219
31-ago-03	254.984	31-ago-03	242.829	31-ago-03	219.115	15.080	31-ago-03	29.717
30-set-03	231.363	30-set-03	231.631	30-set-03	202.670	11.196	30-set-03	25.012
31-ott-03	234.616	31-ott-03	230.698	31-ott-03	192.178	9.577	31-ott-03	24.232
30-nov-03	277.390	30-nov-03	257.604	30-nov-03	215.502	12.841	30-nov-03	27.892
31-dic-03	370.139	31-dic-03	292.191	31-dic-03	238.039	16.818	31-dic-03	36.616
31-gen-04	412.161	31-gen-04	332.806	31-gen-04	278.569	23.037	31-gen-04	48.772
29-feb-04	422.993	29-feb-04	358.463	29-feb-04	283.934	25.434	29-feb-04	53.628
31-mar-04	462.008	31-mar-04	386.486	31-mar-04	285.879	17.775	31-mar-04	59.334
30-apr-04	542.979	30-apr-04	417.039	30-apr-04	316.455	27.004	30-apr-04	64.295
31-mag-04	627.611	31-mag-04	477.986	31-mag-04	326.140	30.014	31-mag-04	74.398



30-giu-04	611.595	30-giu-04	463.819	30-giu-04	306.392	29.728	30-giu-04	71.225
31-lug-04	569.711	31-lug-04	423.496	31-lug-04	282.466	20.318	31-lug-04	63.660
31-ago-04	547.478	31-ago-04	395.063	31-ago-04	272.725	15.720	31-ago-04	60.207
30-set-04	491.370	30-set-04	365.649	30-set-04	242.516	15.067	30-set-04	51.149
31-ott-04	488.695	31-ott-04	374.253	31-ott-04	244.816	13.077	31-ott-04	48.635
30-nov-04	495.738	30-nov-04	377.326	30-nov-04	246.021	12.938	30-nov-04	48.704
31-dic-04	667.189	31-dic-04	464.633	31-dic-04	354.157	21.680	31-dic-04	80.000
31-gen-05	668.892	31-gen-05	446.345	31-gen-05	362.271	23.901	31-gen-05	101.936
28-feb-05	630.610	28-feb-05	433.478	28-feb-05	382.851	31.381	28-feb-05	102.660
31-mar-05	678.989	31-mar-05	483.772	31-mar-05	370.023	33.103	31-mar-05	103.442
30-apr-05	698.305	30-apr-05	493.824	30-apr-05	380.753	33.498	30-apr-05	103.776
31-mag-05	680.524	31-mag-05	492.071	31-mag-05	345.742	29.840	31-mag-05	102.661
30-giu-05	650.690	30-giu-05	486.986	30-giu-05	328.282	24.951	30-giu-05	96.802
31-lug-05	603.400	31-lug-05	448.522	31-lug-05	303.509	21.732	31-lug-05	88.054
31-ago-05	555.674	31-ago-05	418.509	31-ago-05	287.422	18.935	31-ago-05	80.816
30-set-05	521.231	30-set-05	411.187	30-set-05	269.698	16.964	30-set-05	76.133
31-ott-05	491.877	31-ott-05	405.795	31-ott-05	253.971	14.868	31-ott-05	73.214
30-nov-05	479.712	30-nov-05	415.475	30-nov-05	253.773	14.613	30-nov-05	72.029
31-dic-05	508.526	31-dic-05	466.463	31-dic-05	318.070	22.617	31-dic-05	83.661
31-gen-06	599.498	31-gen-06	475.042	31-gen-06	350.819	28.517	31-gen-06	97.527
28-feb-06	635.637	28-feb-06	488.461	28-feb-06	376.426	30.844	28-feb-06	100.819
31-mar-06	652.352	31-mar-06	489.284	31-mar-06	394.842	41.891	31-mar-06	103.665
30-apr-06	645.065	30-apr-06	501.393	30-apr-06	376.480	34.373	30-apr-06	103.442
31-mag-06	621.985	31-mag-06	491.529	31-mag-06	358.571	32.386	31-mag-06	99.257
30-giu-06	587.142	30-giu-06	458.722	30-giu-06	335.031	30.641	30-giu-06	93.733
31-lug-06	545.612	31-lug-06	422.504	31-lug-06	309.536	21.597	31-lug-06	85.358
31-ago-06	499.983	31-ago-06	384.144	31-ago-06	286.558	19.209	31-ago-06	77.360
30-set-06	477.887	30-set-06	379.512	30-set-06	276.614	19.789	30-set-06	73.875
31-ott-06	460.440	31-ott-06	385.166	31-ott-06	263.158	18.028	31-ott-06	69.491
30-nov-06	437.234	30-nov-06	384.290	30-nov-06	236.626	14.481	30-nov-06	66.637
31-dic-06	551.473	31-dic-06	430.120	31-dic-06	281.822	15.832	31-dic-06	82.014
31-gen-07	560.658	31-gen-07	451.213	31-gen-07	277.764	16.455	31-gen-07	85.508
28-feb-07	587.405	28-feb-07	481.735	28-feb-07	327.271	22.656	28-feb-07	94.179
31-mar-07	644.126	31-mar-07	494.751	31-mar-07	329.238	21.466	31-mar-07	100.484
30-apr-07	695.803	30-apr-07	524.248	30-apr-07	344.786	23.398	30-apr-07	102.939
31-mag-07	688.076	31-mag-07	513.006	31-mag-07	319.576	20.530	31-mag-07	101.656
30-giu-07	661.092	30-giu-07	492.183	30-giu-07	293.328	23.206	30-giu-07	96.969
31-lug-07		31-lug-07		31-lug-07			31-lug-07	
31-ago-07		31-ago-07		31-ago-07			31-ago-07	

	V		VI
30-apr-95	31.700	30-apr-95	24.174
31-mag-95	30.600	31-mag-95	25.985
30-giu-95	26.400	30-giu-95	24.970
31-lug-95	20.800	31-lug-95	21.725
31-ago-95	15.200	31-ago-95	18.480
30-set-95	12.800	30-set-95	16.625
31-ott-95	9.500	31-ott-95	3.378
30-nov-95	11.500	30-nov-95	3.080
31-dic-95	28.200	31-dic-95	5.756
31-gen-96	40.360	31-gen-96	22.370
29-feb-96	35.860	29-feb-96	52.008
31-mar-96	39.000	31-mar-96	58.726
30-apr-96	38.360	30-apr-96	59.250
31-mag-96	39.000	31-mag-96	54.112
30-giu-96	38.300	30-giu-96	53.025
31-lug-96	32.400	31-lug-96	49.122
31-ago-96	25.600	31-ago-96	45.480
30-set-96	25.600	30-set-96	42.610
31-ott-96	24.200	31-ott-96	37.920
30-nov-96	26.800	30-nov-96	34.660
31-dic-96	39.000	31-dic-96	57.550
31-gen-97	34.590	31-gen-97	57.270
28-feb-97	36.340	28-feb-97	53.145
31-mar-97	36.890	31-mar-97	51.890
30-apr-97	35.800	30-apr-97	53.300
31-mag-97	37.480	31-mag-97	52.990
30-giu-97	30.860	30-giu-97	47.820
31-lug-97	22.310	31-lug-97	42.187
31-ago-97	15.740	31-ago-97	36.790
30-set-97	11.790	30-set-97	28.996
31-ott-97	21.670	31-ott-97	25.950
30-nov-97	25.030	30-nov-97	24.960
31-dic-97	26.450	31-dic-97	29.330
31-gen-98	33.740	31-gen-98	32.040
28-feb-98	33.120	28-feb-98	36.430
31-mar-98	36.850	31-mar-98	37.290
30-apr-98	40.390	30-apr-98	40.470
31-mag-98	37.790	31-mag-98	43.940
30-giu-98	33.110	30-giu-98	40.260
31-lug-98	24.770	31-lug-98	36.010
31-ago-98	16.850	31-ago-98	32.640
30-set-98	10.860	30-set-98	30.440
31-ott-98	8.910	31-ott-98	29.030
30-nov-98	6.515	30-nov-98	29.190
31-dic-98	33.390	31-dic-98	29.670
31-gen-99	24.413	31-gen-99	36.400
28-feb-99	30.948	28-feb-99	41.800
31-mar-99	40.167	31-mar-99	46.240
30-apr-99	39.687	30-apr-99	48.870
31-mag-99	37.980	31-mag-99	48.900
30-giu-99	30.083	30-giu-99	46.280
31-lug-99	21.285	31-lug-99	43.070
31-ago-99	13.130	31-ago-99	39.230
30-set-99	8.669	30-set-99	34.990

31-ott-99	5.304	31-ott-99	30.570
30-nov-99	20.729	30-nov-99	31.190
31-dic-99	21.653	31-dic-99	47.390
31-gen-00	25.388	31-gen-00	43.400
29-feb-00	28.624	29-feb-00	42.800
31-mar-00	29.808	31-mar-00	43.330
30-apr-00	33.186	30-apr-00	45.320
31-mag-00	30.683	31-mag-00	34.650
30-giu-00	25.691	30-giu-00	32.170
31-lug-00	18.007	31-lug-00	28.130
31-ago-00	10.524	31-ago-00	24.130
30-set-00	5.259	30-set-00	20.410
31-ott-00	5.371	31-ott-00	20.170
30-nov-00	9.061	30-nov-00	20.365
31-dic-00	15.553	31-dic-00	24.223
31-gen-01	30.541	31-gen-01	43.978
28-feb-01	39.230	28-feb-01	50.413
31-mar-01	39.899	31-mar-01	53.238
30-apr-01	40.204	30-apr-01	53.909
31-mag-01	37.722	31-mag-01	53.098
30-giu-01	29.583	30-giu-01	49.362
31-lug-01	21.015	31-lug-01	44.834
31-ago-01	13.150	31-ago-01	40.461
30-set-01	7.856	30-set-01	37.284
31-ott-01	4.145	31-ott-01	35.496
30-nov-01	3.983	30-nov-01	34.204
31-dic-01	12.451	31-dic-01	34.230
31-gen-02	15.425	31-gen-02	34.306
28-feb-02	19.682	28-feb-02	34.774
31-mar-02	23.755	31-mar-02	35.156
30-apr-02	35.166	30-apr-02	39.009
31-mag-02	35.305	31-mag-02	39.080
30-giu-02	28.151	30-giu-02	17.455
31-lug-02	22.557	31-lug-02	13.217
31-ago-02	12.384	31-ago-02	13.350
30-set-02	17.929	30-set-02	12.604
31-ott-02	16.517	31-ott-02	11.452
30-nov-02	19.178	30-nov-02	11.042
31-dic-02	32.598	31-dic-02	13.978
31-gen-03	34.034	31-gen-03	30.257
28-feb-03	41.050	28-feb-03	56.108
31-mar-03	40.389	31-mar-03	58.674
30-apr-03	40.980	30-apr-03	59.351
31-mag-03	38.145	31-mag-03	59.323
30-giu-03	31.490	30-giu-03	56.492
31-lug-03	23.162	31-lug-03	52.911
31-ago-03	15.286	31-ago-03	48.664
30-set-03	12.648	30-set-03	46.586
31-ott-03	23.324	31-ott-03	49.622
30-nov-03	32.004	30-nov-03	56.400
31-dic-03	29.084	31-dic-03	56.158
31-gen-04	31.326	31-gen-04	57.622
29-feb-04	31.131	29-feb-04	55.362
31-mar-04	40.675	31-mar-04	56.227
30-apr-04	41.120	30-apr-04	59.800
31-mag-04	40.894	31-mag-04	57.686

30-giu-04	38.536	30-giu-04	55.600
31-lug-04	30.854	31-lug-04	51.813
31-ago-04	26.558	31-ago-04	49.477
30-set-04	16.555	30-set-04	44.195
31-ott-04	24.209	31-ott-04	44.494
30-nov-04	19.652	30-nov-04	45.875
31-dic-04	24.638	31-dic-04	59.906
31-gen-05	22.477	31-gen-05	56.888
28-feb-05	23.292	28-feb-05	59.780
31-mar-05	18.310	31-mar-05	58.900
30-apr-05	28.365	30-apr-05	58.610
31-mag-05	33.327	31-mag-05	54.662
30-giu-05	31.154	30-giu-05	53.186
31-lug-05	24.050	31-lug-05	49.986
31-ago-05	17.782	31-ago-05	47.826
30-set-05	14.704	30-set-05	43.539
31-ott-05	12.069	31-ott-05	40.509
30-nov-05	12.316	30-nov-05	40.013
31-dic-05	20.901	31-dic-05	42.189
31-gen-06	23.494	31-gen-06	59.878
28-feb-06	28.247	28-feb-06	57.809
31-mar-06	37.125	31-mar-06	58.427
30-apr-06	39.025	30-apr-06	56.598
31-mag-06	38.742	31-mag-06	53.398
30-giu-06	33.280	30-giu-06	49.421
31-lug-06	25.652	31-lug-06	46.130
31-ago-06	18.659	31-ago-06	42.440
30-set-06	14.612	30-set-06	40.380
31-ott-06	18.301	31-ott-06	41.406
30-nov-06	11.591	30-nov-06	39.515
31-dic-06	23.170	31-dic-06	59.906
31-gen-07	12.599	31-gen-07	54.846
28-feb-07	22.106	28-feb-07	55.628
31-mar-07	27.578	31-mar-07	56.513
30-apr-07	40.239	30-apr-07	57.302
31-mag-07	38.529	31-mag-07	54.020
30-giu-07	37.633	30-giu-07	50.004
31-lug-07		31-lug-07	
31-ago-07		31-ago-07	